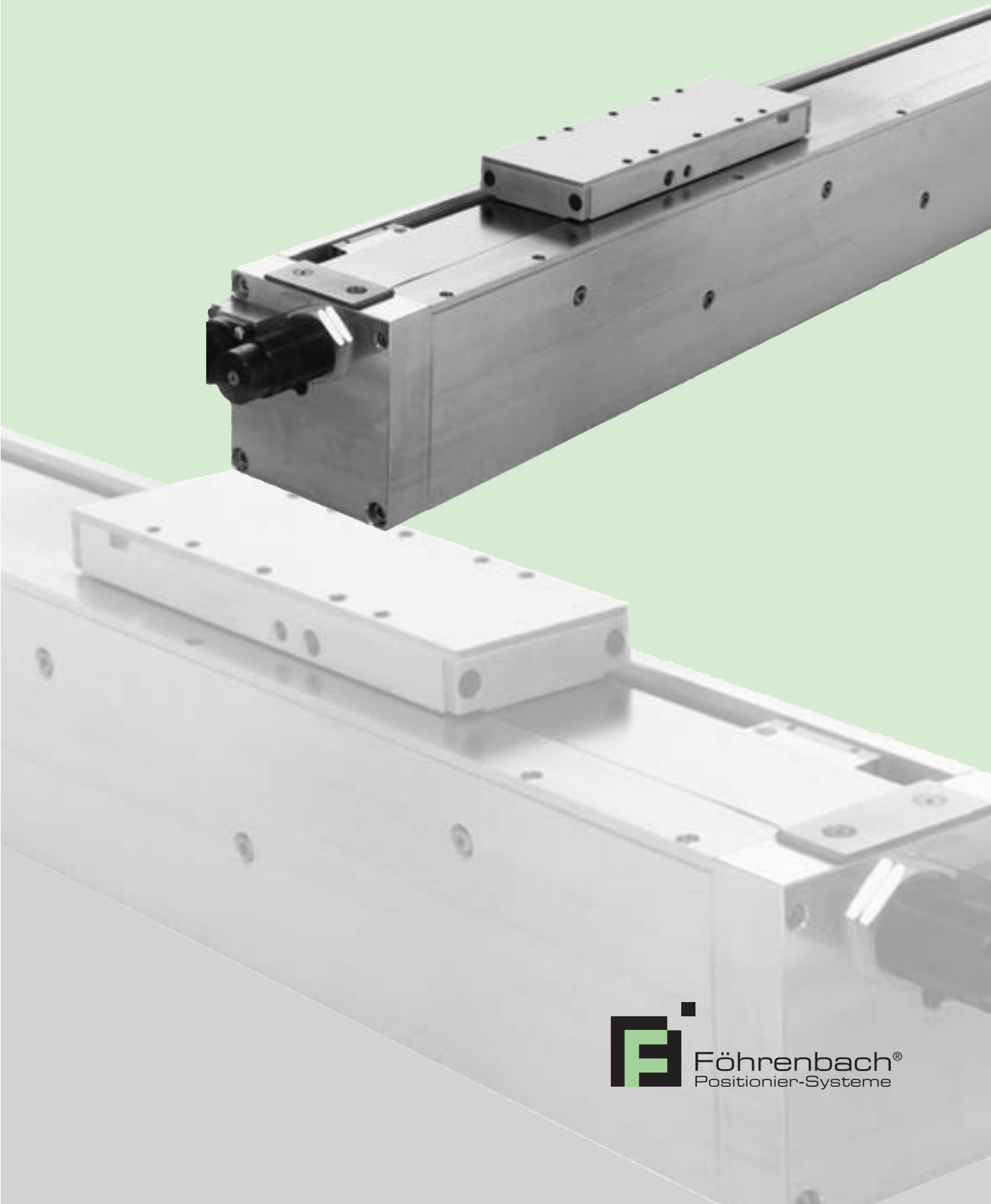


Handling Module, Type LDH

with direct drive



Föhrenbach GmbH



Föhrenbach AG

Our range of products

Plain Bearing Guides

- Dovetail guides
- Flatbed guides
- Co-ordinate tables

Roller Bearing Guides

- Roller and ball bearing guides
- Co-ordinate tables with ball and roller bearings
- Ball bushing slides

Accessories

- Seals
- Mounting flanges
- Turntables
- Guide rails
- Covers

Rotary Tables

- with stepper motor
- with servo motor
- with direct drive

Control Systems

- Straight line control systems
- Continuous path control systems with integrated PLC

Drives

- Electric motors
 - stepper motors 2 ph./3 ph./5 ph.
 - AC servomotors
- Power amplifiers
 - Amplifiers
 - Servo controllers

The Föhrenbach Group

Founded in 1975 by Manfred Föhrenbach, the Group today numbers among the leading producers in the automation systems and machine building branch.

■ The wide-spread product line offers nearly all components you need to cover the full spectrum of your special automation technique tasks.

■ The large manufacturing range, made possible by our plants located in Löffingen-Unadingen (Germany), Weinfelden (Switzerland) and Sligo (Ireland) and latest production facilities assure permanent high quality.

Shape-tailored complete solutions for almost all branches: Föhrenbach units are on duty worldwide, e.g. for measuring, checking, assorting, palletising, adjusting, milling, boring, grinding, welding, gluing, screwing, riveting,....



M. Föhrenbach GmbH

Lindenstraße 34
D-79843 Löffingen-Unadingen
Telefon +49 (0) 7707 159 0
Telefax +49 (0) 7707 159 70
info@foehrenbach.com

Föhrenbach AG

Tannenwiesenstraße 3
CH-8570 Weinfelden
Telefon +41 (0) 71 626 26 76
Telefax +41 (0) 71 626 26 77
info.ch@foehrenbach.com

Handling Module, Type LDH

with direct drive

The LDH is an extremely compact direct driven linear module. Highly integrated components, optimally tuned to each another, guarantee for high efficiency and operating facility. Design and construction of the LDH assure optimum smoothness of running.

Drive

Electronically commutated 3 phase synchronous linear motor with permanent magnetic secondary part.

Measuring system

Incremental measuring system with optic scanning and resolution up to 0.1 μm .

Guide

A profile guide rail with ball deflection guarantees for high run-out accuracy, rigidity and loading capacity.

Mounting and add-on options

Standard drilling patterns in inside and outside part cover a large number of the occurring mounting cases.

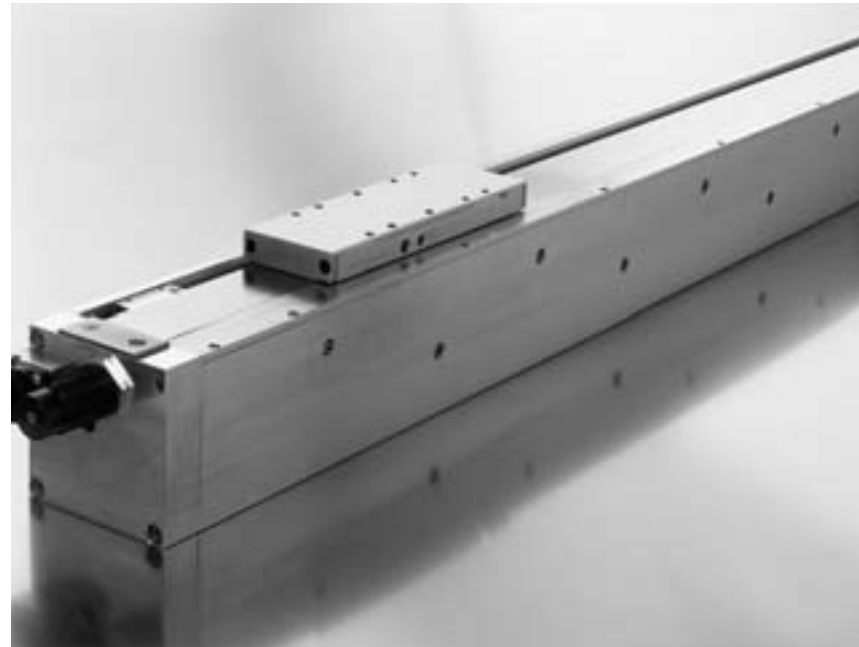
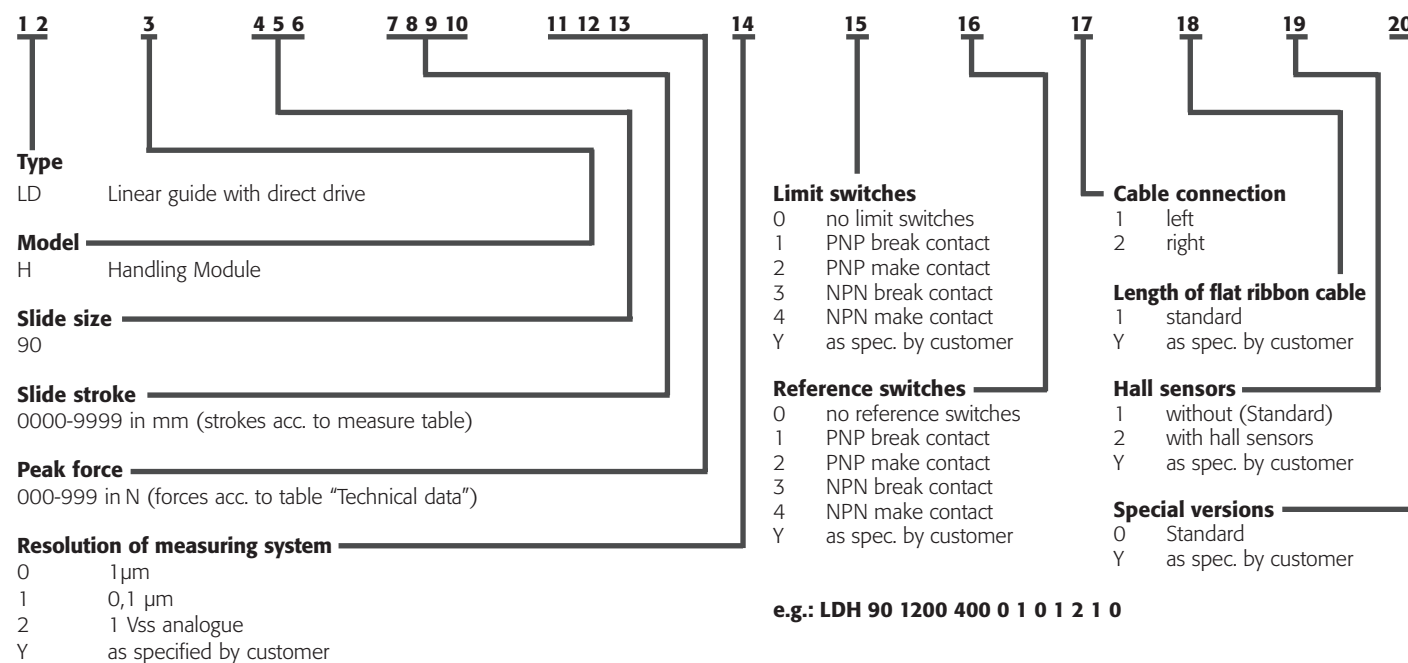
Connection

A flat ribbon cable, especially developed for use with Föhrenbach positioning systems, is delivered with it which provides the necessary electric supply lines to the slide. It also includes two flexible tubes for pneumatically operated add-on assemblies.

Application options

Highly dynamic adjusting movements as well as general handling tasks, e.g. in the following fields: laser optics, electronic production, testing and measuring devices, mounting cells, manufacture etc.

Order code



Technical data

Max. speed ¹⁾	[m/s]	1 / 5 / 10
Max. acceleration ²⁾	[m/s ²]	100
Variation of position ³⁾	[mm]	0.02
Uncertainty of position ³⁾	[mm]	0.04

1) Depending on resolution of measuring system (0.1 μm / 1 μm / 1 V_{ss}) on the stroke resp.
2) Without load; limited by the mechanism of the guide rails
3) Depending on resolution of measuring system

Driving forces

Type	Peak force [N]	Cont. force [N]
LDH 90 XXXX 400	400	65
LDH 90 XXXX 600	600	98
LDH 90 XXXX 800	800	131

Dimensions in mm

Type	stroke	B	B ₁	L ⁴⁾	L ₁ ⁴⁾	L ₂ ⁴⁾	L ⁵⁾	L ₁ ⁵⁾	L ₂ ⁵⁾	L ⁶⁾	L ₁ ⁶⁾	L ₂ ⁶⁾	H	H ₁	O
LDH 90 0500	500	90	176	940	200	800	990	250	800	1040	300	900	91	27	25
LDH 90 0600	600	90	176	1040	200	900	1090	250	900	1140	300	1000	91	27	25
LDH 90 0700	700	90	176	1140	200	1000	1190	250	1000	1240	300	1100	91	27	25
LDH 90 0800	800	90	176	1240	200	1100	1290	250	1100	1340	300	1200	91	27	25
LDH 90 0900	900	90	176	1340	200	1200	1390	250	1200	1440	300	1300	91	27	25
LDH 90 1000	1000	90	176	1440	200	1300	1490	250	1300	1540	300	1400	91	27	25
LDH 90 1200	1200	90	176	1640	200	1500	1690	250	1500	1740	300	1600	91	27	25
LDH 90 1400	1400	90	176	1840	200	1700	1790	250	1700	1940	300	1800	91	27	25
LDH 90 1600	1600	90	176	2040	200	1900	2090	250	1900	2140	300	2000	91	27	25
LDH 90 1800	1800	90	176	2240	200	2100	2290	250	2100	2340	300	2200	91	27	25
LDH 90 2000	2000	90	176	2440	200	2300	2490	250	2300	2540	300	2400	91	27	25

4) at peak force 400 N
5) at peak force 600 N
6) at peak force 800 N

