

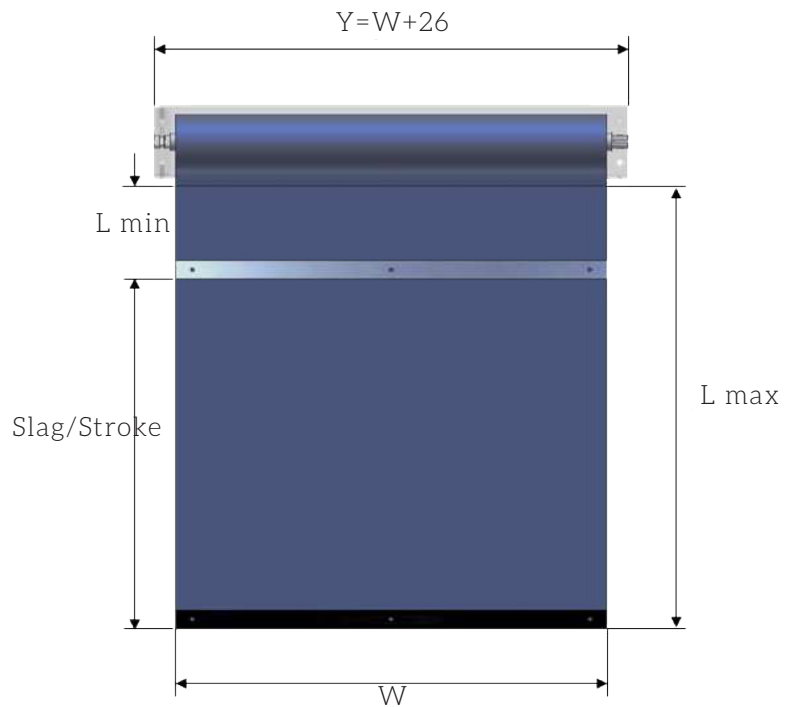
# Offertunderlag rullbandskydd

Företag/Company \_\_\_\_\_

Namn/Name \_\_\_\_\_ Tel \_\_\_\_\_

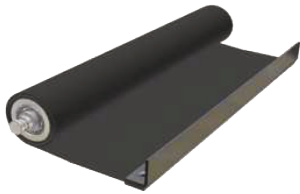
Mail \_\_\_\_\_ Datum/Date \_\_\_\_\_

L min \_\_\_\_\_ mm  
 L max \_\_\_\_\_ mm  
 Slag/Stroke \_\_\_\_\_ mm  
 W \_\_\_\_\_ mm  
 X1 \_\_\_\_\_ mm  
 X2 \_\_\_\_\_ mm  
 D max \_\_\_\_\_ mm

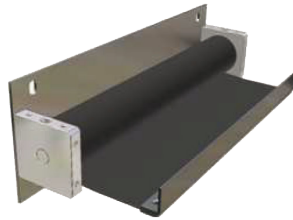


**STEG 1**

**TYP AV RULLBANDSSKYDD/ROLLER TYPE**



A



B



C

---

**STEG 2**

**TYP AV HUS/HOUSING TYPE**



S



F

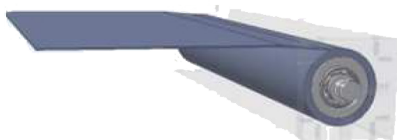


P

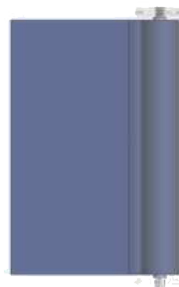
---

**STEG 3**

**MONTERINGSLÄGE/MOUNTING POSITION**



HO



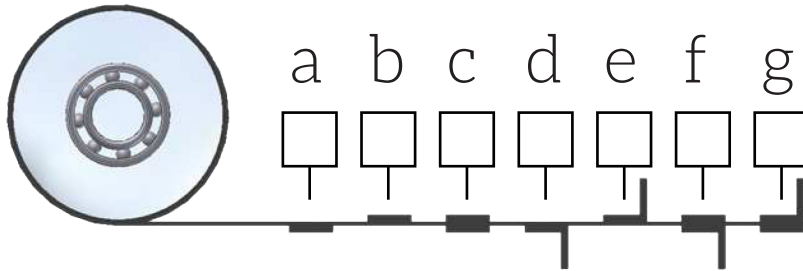
FO



VO

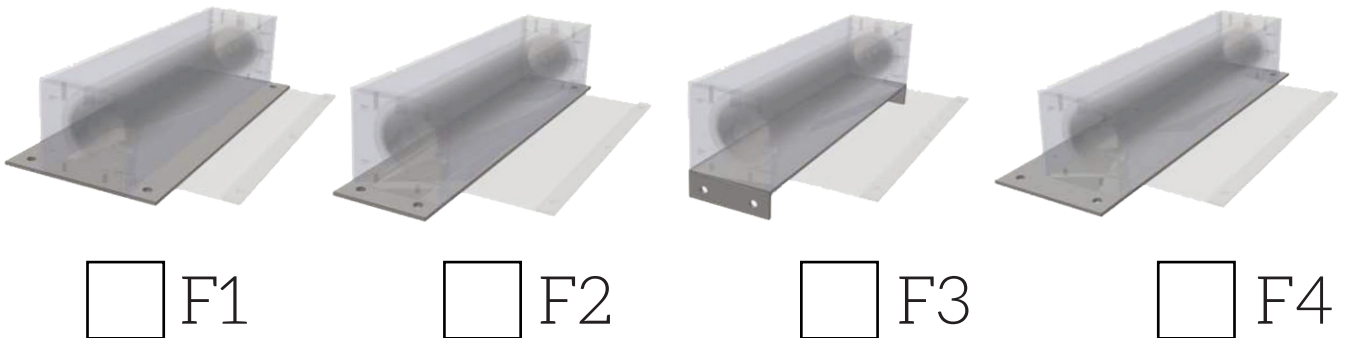
**STEG 4**

**FÄSTE AV BAND/ATTACHMENT OF THE BAND**



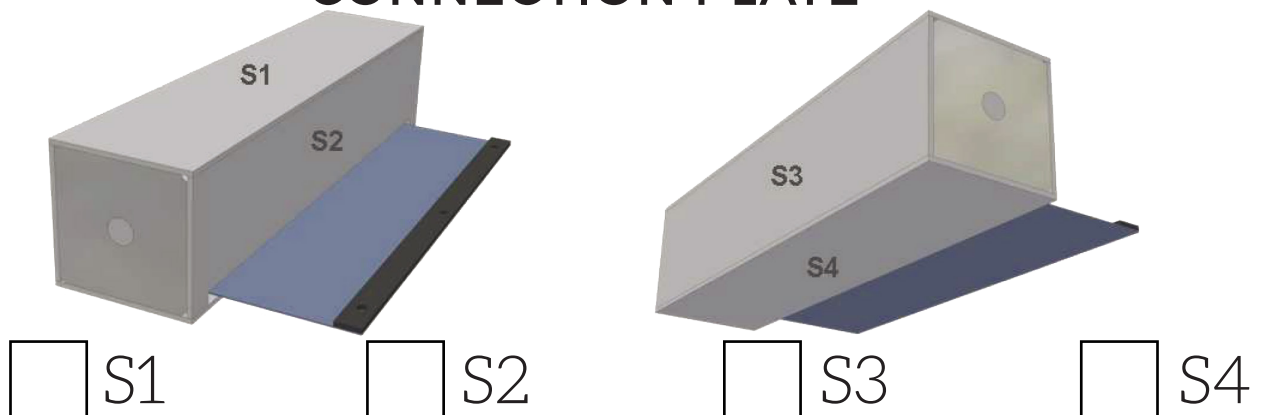
**STEG 5**

**TYP AV ANSLUTNINGSPLATTA/CONNECTION PLATE**



**STEG 6**

**POSITION AV ANSLUTNINGSPLATTA/POSITION OF CONNECTION PLATE**



## STEG 7

# MATERIAL PÅ BAND/INQUIRY SHEET

NR.	FRAM / MITTEN / BAK	FÄRG	TJOCKLEK (MM)	BREDD (MM)	VÄRME EGENSKAPER (°C) MIN / MAX / SHORT-TIME	SKYDDAR MOT
01	PUR/PES/-	Blank Svart	0,9	2000	-35° / +80° /+120°	Damm Olja Kylvätska vatten
02	PUR/PES/-	Blank Vit	0,9	2000	-35° / +80° /+120°	
03	PUR/PES/-	Blank Grön	0,9	2000	-35° / +80° /+120°	
04	PUR/PES/-	Blank Grön	1,5	2000	-35° / +80° /+120°	
05	PUR/PES/PUR	Matt Svart	0,34	1500	-35° / +90° /+180°	Syra Olja Kylvätska Vatten
06	PUR/PES/PUR	Matt Svart	0,21	1500	-35° / +90° /+140°	
07	PUR/NOMEX/PUR	Matt Svart	0,35	1500	-35° / +120° /+230°	
08	PVC/PES/PVC	Blank Svart	0,26	1500	-25° / +80° /+120°	Damm vatten
09	PVC/PES/PVC	Blank Svart	0,5	2000	-25° / +80° /+120°	
10	PVC/PES/-	Blank Svart	0,9	2000	-25° / +80° /+120°	
11	PVC/PES/-	Blank Vit	0,9	2000	-25° / +80° /+120°	
12	PVC	Transparant	1,0	1500	-25° / +80° /+100°	Syra Damm Olja, Vatten Kylvätska Alkalisk
13	FPM/PES/-	Matt Svart	1,2	1200	-40° / +120° /+200°	
14	Rostfritt	Silver	0,25	600	-40° / +100° /+300°	
15	Rostfritt	Silver	0,2	1200	-40° / +100° /+300°	

## DITT RULLBANDSKYDD

STEG 1	STEG 2	STEG 3	STEG 4	STEG 5	STEG 6	STEG 7

## EXEMPEL

STEG 1	STEG 2	STEG 3	STEG 4	STEG 5	STEG 6	STEG 7
<b>C</b>	<b>S</b>	<b>HO</b>	<b>e</b>	<b>F1</b>	<b>S3</b>	<b>01</b>