

## // 01 AULED PRODUCT SERIES

**STYLE & FUNCTIONALITY IN PERFECTION**

# AuLED

What distinguishes our AuLED product series?

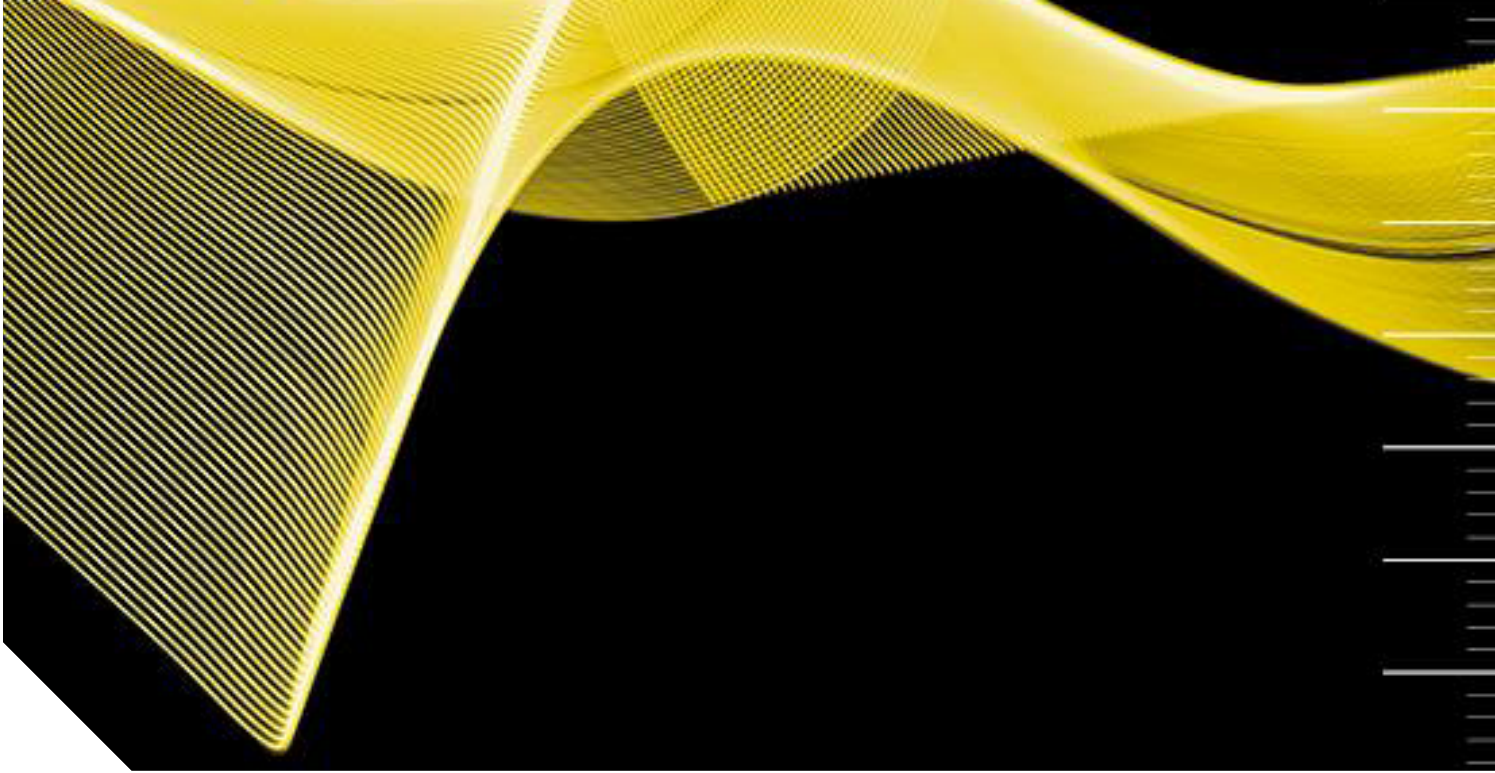
High quality, a straightforward, appealing design, functionality and an enormous range of available model variants, thus offering an unbeatably wide variety of applications.

The AuLED type of lamp is a true „allrounder“, its housing made of aluminium or stainless steel, cooled, as built-in or surface lamp, M8 or M12 connector, pure white light or the combination of all colours ...

please discover on the next pages the great diversity of our AuLED product range.

As diverse as the models available are the potential fields of applications of our AuLED lamps: no matter whether it is in the food industry, classical mechanical engineering, textile industry or in workshops – our AuLED lamps reliably ensure optimal lighting conditions.





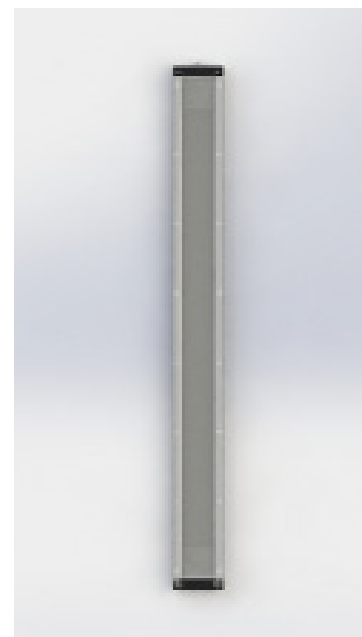
# AuLED 22/502021



## // TECHNICAL DATA

### ITEM NO.: 592-502-021

Operating voltage	24 V DC
Rated output	48 W
Ambient temp.	-5°C - max. 40°C
System of protection	IP67
Protection class	SK II
Weight	3,8 kg
Glass plate	ESG
Lamp housing	Aluminium, anodized
Type of lighting	Surface lamp
Scope of application	Industrial sector



## // LIGHT SOURCES

Number of LEDs	126
Current	1,84 A
Lifetime	> 60.000 h
Colour rendering	Ra > 80
Energy efficiency class	A ++
Luminous flux	6760 lm
Light efficiency	153 lm / W
Light colour	5000 K

## // BALLAST (external)

Output voltage	24 V DC
Output power	min. 52 W

## // ELECTRICAL CONNECTION

Type of connection	Flange plug M8x1, 3-pole
Pin assignment	Pin 1: + 24 V DC; Pin 3: GND

## // FEATURES

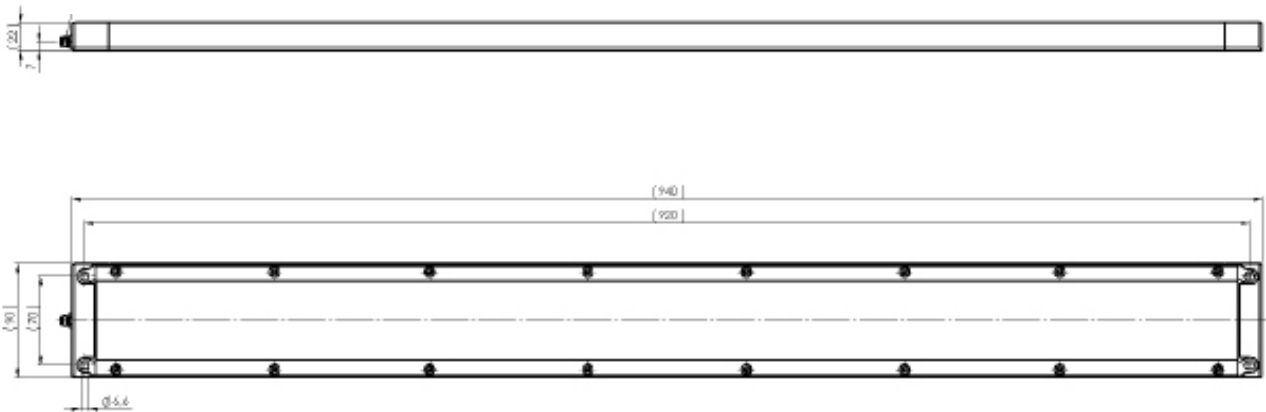
- Protection against temporary submersion
- Space-saving installation due to slim design
- Style & functionality perfectly combined
- Good light output – highest luminous flux of this lamp series
- Uncomplicated M8 plug connector



## // SHORT OVERVIEW

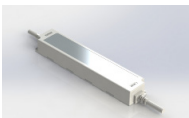
TYPE	ITEM NO.	VOLTAGE	POWER	LUMINOUS/ LUMEN	COVERAGE	DIMENSIONS/ MM	PLUG
AuLED 22	592-502-021	24 V DC	48 W	6760	ESG, clear	940x90x22	M8, lateral

## // TECHNICAL DRAWING



## // ACCESSORIES (optional)

Power supply SELV (IP66)



ITEM NO. 213-820-214

Input: 220-240 V | 0-60 Hz |

Output: 24 V DC | max. 60 W

Connection cable M8



ITEM NO. 214-100-001

System of protection IP 67 | Length = 2 m

## // STANDARDS

EN 55015:2016-04  
 EN 60598-1:2015-10  
 EN 62031:2015-09  
 UL 2108

**TECHMALUX**