

## // 03 CARLIFT PRODUCT SERIES

**SLIM DESIGN - GREAT EFFECT!**

# CarLift

Our CarLift lamps are a real space-saving miracle!

Flat, narrow, light and simply easy to handle.

A further advantage is the type of fastening – there are three different ways: via the end caps, a screw channel at its rear or optional accessories – you can choose which version fits you best!

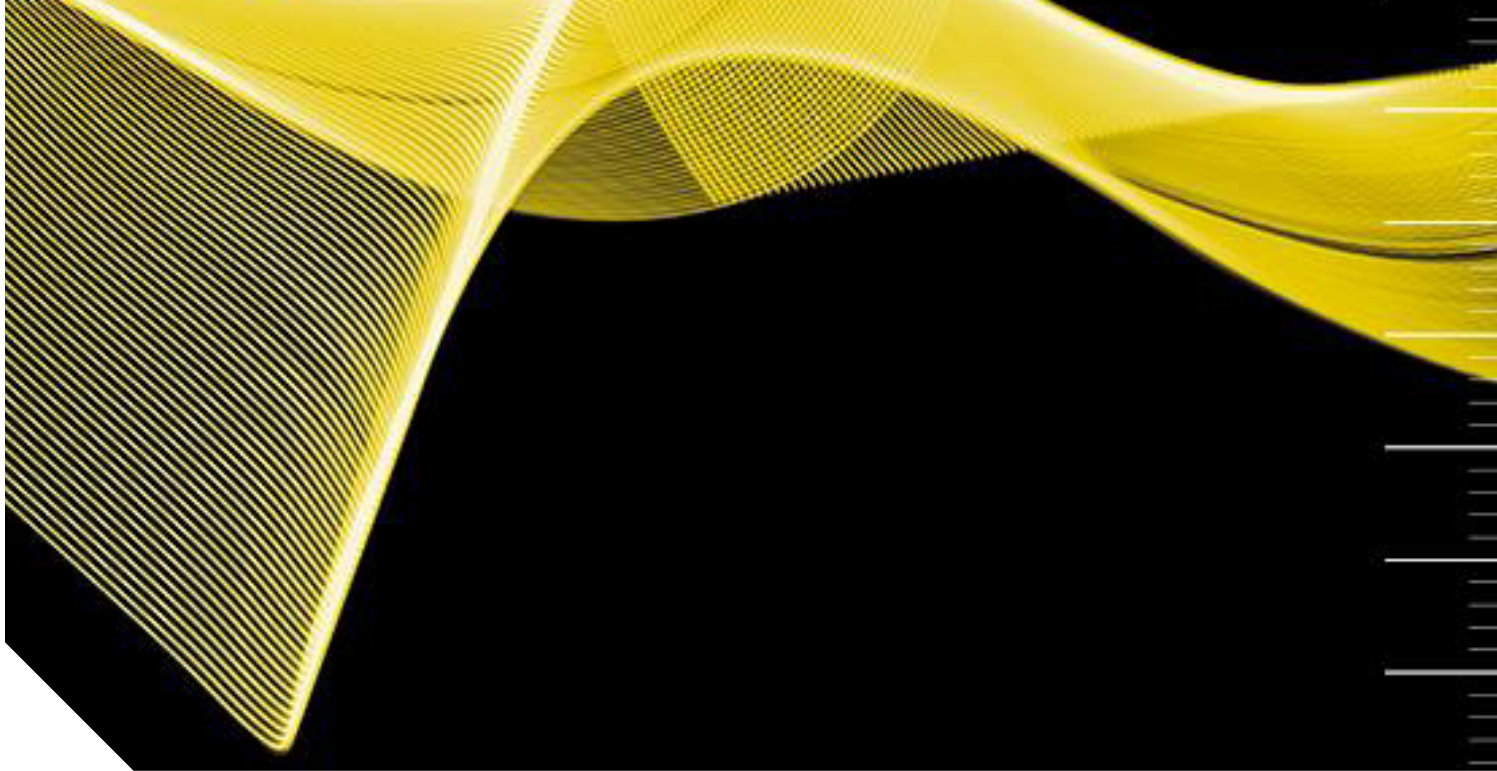
The unique feature of this product series is the cover which is flattened by 15°. This slightly flattened cover allows illumination of your workplace or machine almost without glare – without losing light power, e.g. due to a satin cover.

Our CarLift lamps are available in various versions and lengths.

As you can see, not only the large variety of models available, but particularly the flexibility of this lamp makes this product series a small „all-rounder“.

If large or narrow spaces have to be illuminated, in the classical mechanical engineering sector, in railway construction, lifting platforms, ...Our CarLift lamps ensure perfect illumination almost everywhere.





# CarLift/153005



## // TECHNICAL DATA

### ITEM NO.: 591-153-005

Operating voltage	24 V DC
Rated output	15,2 W
Ambient temp.	-5°C - max. 50°C
System of protection	IP67
Protection class	SK II
Weight	0,47 kg
Coverage	Polycarbonat
Lamp housing	Aluminium, anodized
Type of lighting	Surface lamp
Scope of application	Industrial sector



## // LIGHT SOURCES

Number of LEDs	54
Current	0,63 A
Lifetime	> 60.000 h
Colour rendering	Ra > 80
Energy efficiency class	A ++
Luminous flux	1900 lm
Light efficiency	125 lm / W
Light colour	5000 K

## // BALLAST (external)

Output voltage	24 V DC
Output power	min. 19 W

## // ELECTRICAL CONNECTION

Type of connection	Flange plug M8x1, 3-pole
Pin assignment	Pin 1: + 24 V DC; Pin 3: GND

## // FEATURES

- Connection to machine voltage 24 V DC
- Connection cable included
- Different lengths additionally available
- Good glare protection via polycarbonate cover
- M8 connector

Male insert (mating side)



## // SHORT OVERVIEW

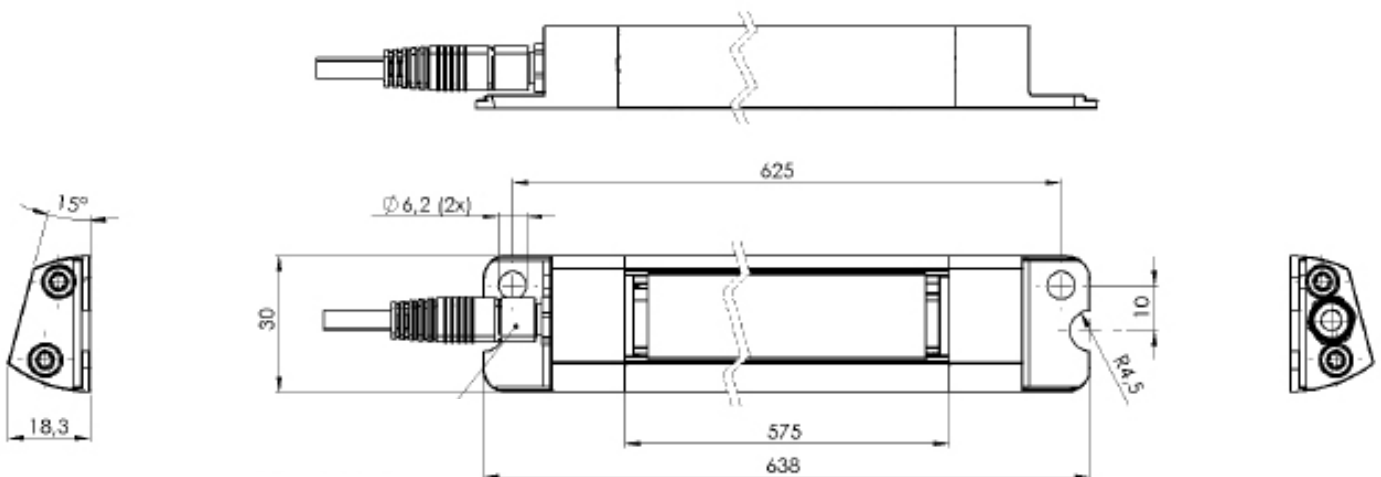
TYPE	ITEM NO.	VOLTAGE	POWER	LUMINOUS/ LUMEN	COVERAGE	DIMENSIONS/ MM	PLUG
CarLift	591-153-005	24 V DC	15,2 W	1900	PC	638x30x18	M8, lateral

## // VARIATIONS

TYPE	ITEM NO.	VOLTAGE	POWER	LUMINOUS/ LUMEN	COVERAGE	DIMENSIONS/ MM	PLUG
CarLift	591-153-002	24 V DC	33,6 W	4200	PC	1537x30x18	M8, lateral
CarLift	591-153-003	24 V DC	8,4 W	1050	PC	413x30x18	M8, lateral
CarLift	591-153-030	24 V DC	67,2 W	8400	PC	2563x30x18	M8, lateral

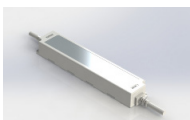
Other variations available! For further information, please contact us.

## // TECHNICAL DRAWING



## // FIXING / ACCESSORIES (optional)

Power supply SELV (IP67)

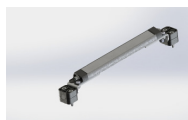


ITEM NO. 213-820-219

Input: 110-240 V | 50-60 Hz

Output: 24 V DC | max. 25 W

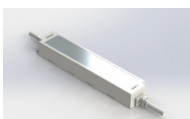
Mounting kit (rotatable)



ITEM NO. 599-001-021

Aluminium, VPE = 2 pcs.

Power supply SELV (IP64)



ITEM NO. 213-820-207

Input: 110-240 V | 50-60 Hz

Output: 24 V DC | max. 100 W

## // STANDARDS

EN 55015:2016-04  
 EN 60598-1:2015-10  
 EN 62031:2015-09  
 UL 2108

**TECHMALUX**

# CarLift/153007



## // TECHNICAL DATA

### ITEM NO.: 591-153-007

Operating voltage	24 V DC
Rated output	15,2 W
Ambient temp.	-5°C - max. 50°C
System of protection	IP67
Protection class	SK II
Weight	0,47 kg
Coverage	ESG
Lamp housing	Aluminium, anodized
Type of lighting	Surface lamp
Scope of application	Industrial sector



## // LIGHT SOURCES

Number of LEDs	54
Current	0,63 A
Lifetime	> 60.000 h
Colour rendering	Ra > 80
Energy efficiency class	A ++
Luminous flux	1900 lm
Light efficiency	125 lm / W
Light colour	5000 K

## // BALLAST (external)

Output voltage	24 V DC
Output power	min. 19 W

## // ELECTRICAL CONNECTION

Type of connection	Flange plug M8x1, 3-pole
Pin assignment	Pin 1: + 24 V DC; Pin 3: GND

## // FEATURES

- Robust housing with sophisticated slope
- Optional: rotatable mounting kit
- Excellent light output
- Many fields of application: rail construction, workshop, mechanical engineering, ...

Male insert (mating side)



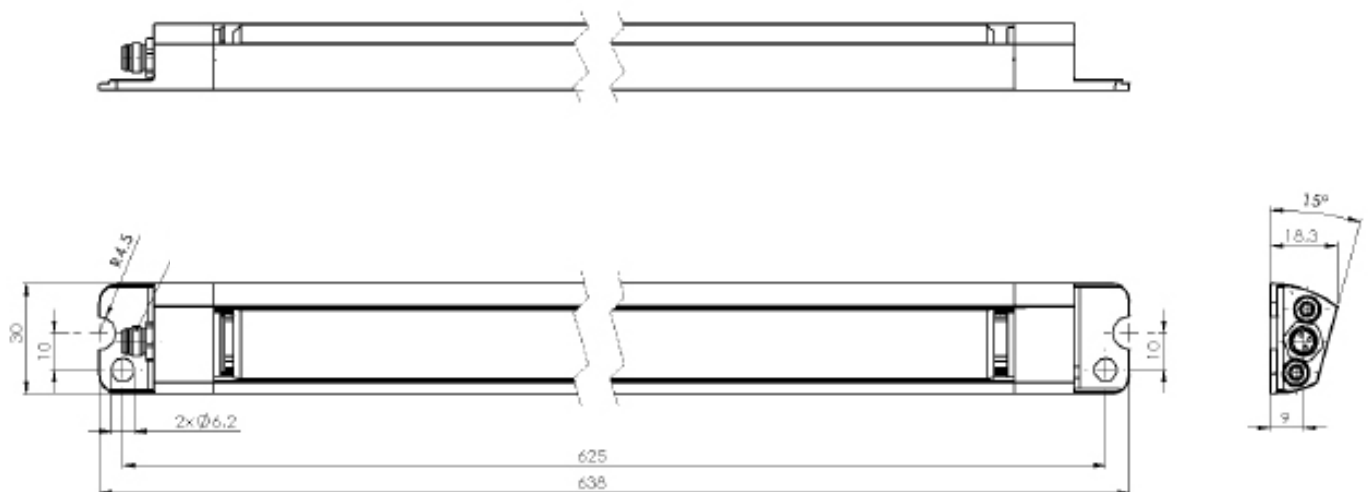
## // SHORT OVERVIEW

TYPE	ITEM NO.	VOLTAGE	POWER	LUMINOUS/ LUMEN	COVERAGE	DIMENSIONS/ MM	PLUG
CarLift	591-153-007	24 V DC	15,2 W	1900	ESG, clear	638x30x18	M8, lateral

## // VARIATIONS

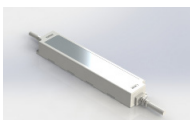
TYPE	ITEM NO.	VOLTAGE	POWER	LUMINOUS/ LUMEN	COVERAGE	DIMENSIONS/ MM	PLUG
CarLift	591-153-004	24 V DC	8,4 W	1050	ESG, clear	403x30x18	M8, lateral
CarLift	591-153-028	24 V DC	5,1 W	630	ESG, clear	276x30x18	M8, lateral

## // TECHNICAL DRAWING



## // FIXING / ACCESSORIES (optional)

Power supply SELV (IP67)



ITEM NO. 213-820-219

Input: 110-240 V | 50-60 Hz

Output: 24 V DC | max. 25 W

Mounting kit (rotatable)



ITEM NO. 599-001-021

Aluminium, VPE = 2pcs.

## // STANDARDS

EN 55015:2016-04  
 EN 60598-1:2015-10  
 EN 62031:2015-09  
 UL 2108

**TECHMALUX**



## // TECHNICAL DATA

### ITEM NO.: 591-153-036

Operating voltage	24 V DC
Rated output	15,2 W
Ambient temp.	-5°C - max. 50°C
System of protection	IP67   SK II
Weight	0,47 kg
Coverage	ESG
Potting compound	Polyurethan
Lamp housing	Aluminium, anodized
Type of lighting	Surface lamp
Scope of application	Industrial sector



## // LIGHT SOURCES

Number of LEDs	54
Current	0,63 A
Lifetime	> 60.000 h
Colour rendering	Ra > 80
Energy efficiency class	A ++
Luminous flux	1900 lm
Light efficiency	125 lm / W
Light colour	5000 K

## // BALLAST (external)

Output voltage	24 V DC
Output power	min. 19 W

## // ELECTRICAL CONNECTION

Type of connection	Flange plug M8x1, 3-pole
Pin assignment	Pin 1: + 24 V DC; Pin 3: GND

## // FEATURES

- Resistant overmolding variant – for use in particular harsh environments
- Common M8 connector ensures quick connection
- Various types of fastening: via the end caps, a screw channel at its rear or optional accessories

Male insert (mating side)



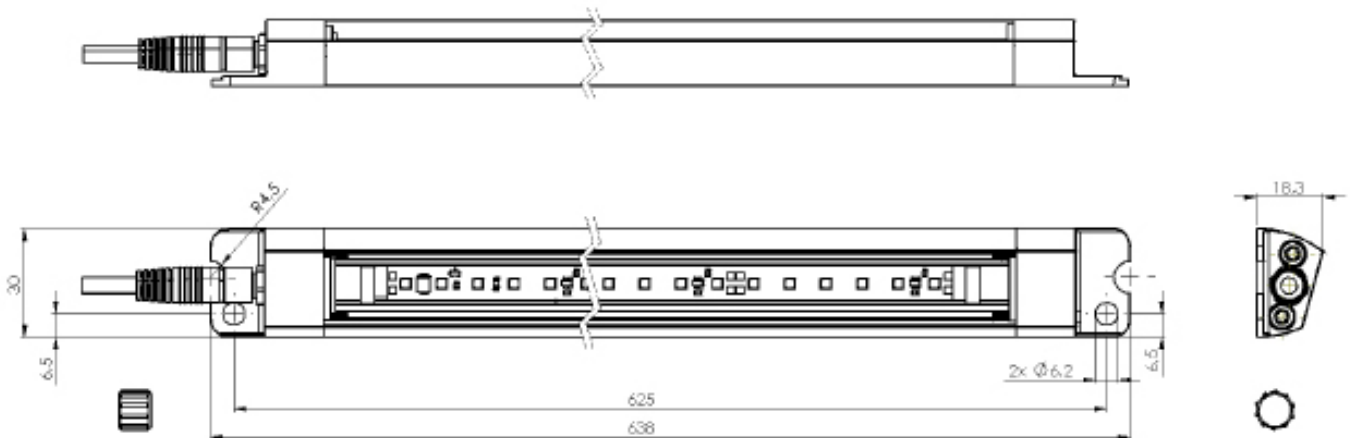
## // SHORT OVERVIEW

TYPE	ITEM NO.	VOLTAGE	POWER	LUMINOUS/ LUMEN	COVERAGE	DIMENSIONS/ MM	PLUG
CarLift	591-153-036	24 V DC	15,2 W	1900	overmolding	638x30x18	M8, lateral

## // VARIATIONS

TYPE	ITEM NO.	VOLTAGE	POWER	LUMINOUS/ LUMEN	COVERAGE	DIMENSIONS/ MM	PLUG
CarLift	591-153-037	24 V DC	8,4 W	1050	overmolding	403x30x18	M8, lateral

## // TECHNICAL DRAWING



## // FIXING / ACCESSORIES (optional)

Power supply SELV (IP67)

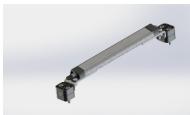


ITEM NO. 213-820-219

Input: 110-240 V | 50-60 Hz

Output: 24 V DC | max. 25 W

Mounting kit (rotatable)



ITEM NO. 599-001-021

Aluminium, VPE = 2pcs.

## // STANDARDS

EN 55015:2016-04  
 EN 60598-1:2015-10  
 EN 62031:2015-09  
 UL 2108

**TECHMALUX**