

// 04 SETROLINE PRODUCT SERIES

**3 INSTALLATION VARIANTS
COMBINED IN ONE LAMP**

Setroline

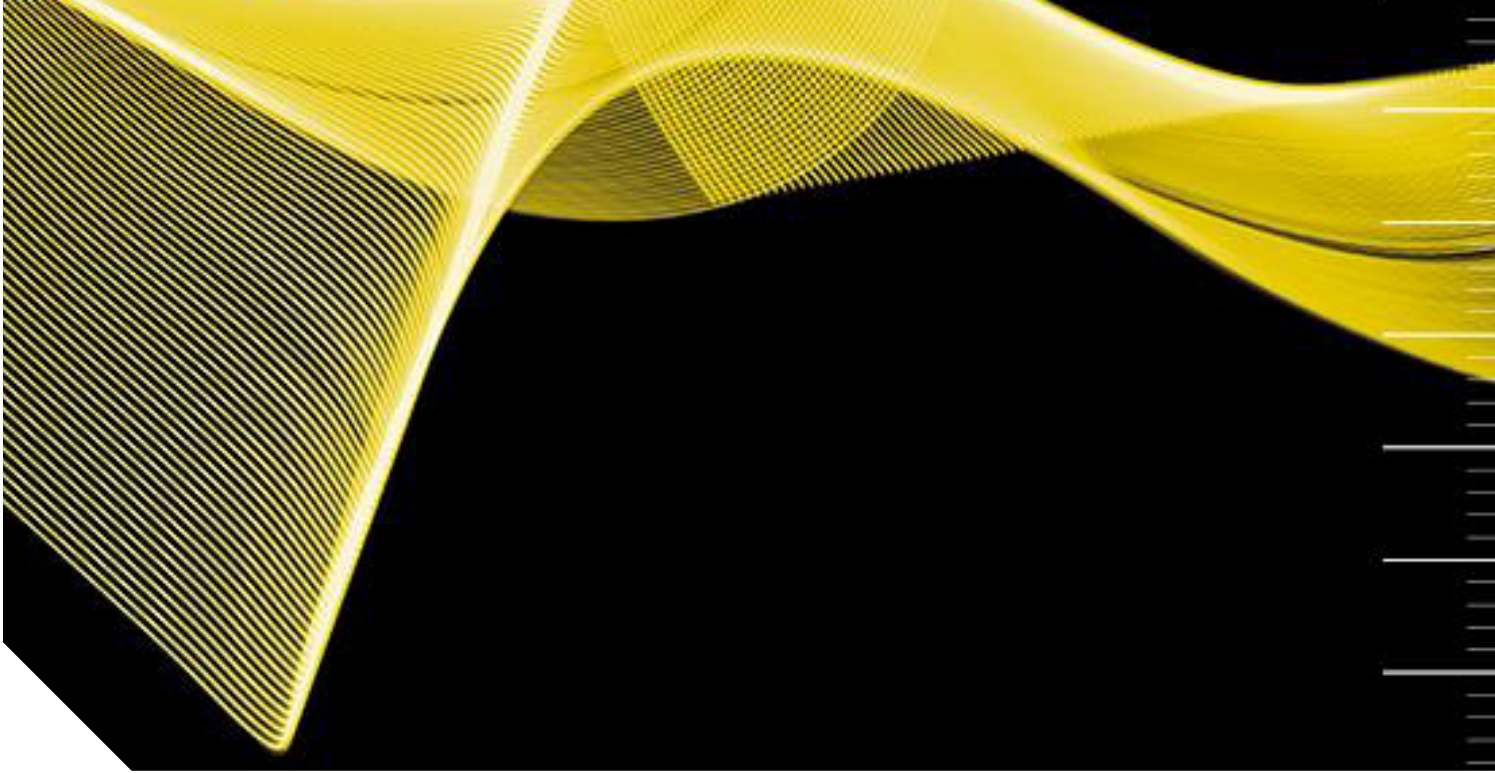
The lamps within our large line of products are real masters of adaptation! No matter whether you are looking for a recessed, surface or tube lamp with a classical diameter of 70 mm – a TECHMALUX Setroline lamp will always be a good choice!

Due to a sophisticated aluminium housing, the lamp has the typical features of a tube lamp. However, it can also easily and quickly be mounted and used as a recessed or surface lamp via a specific fixing material. Which is quite useful!

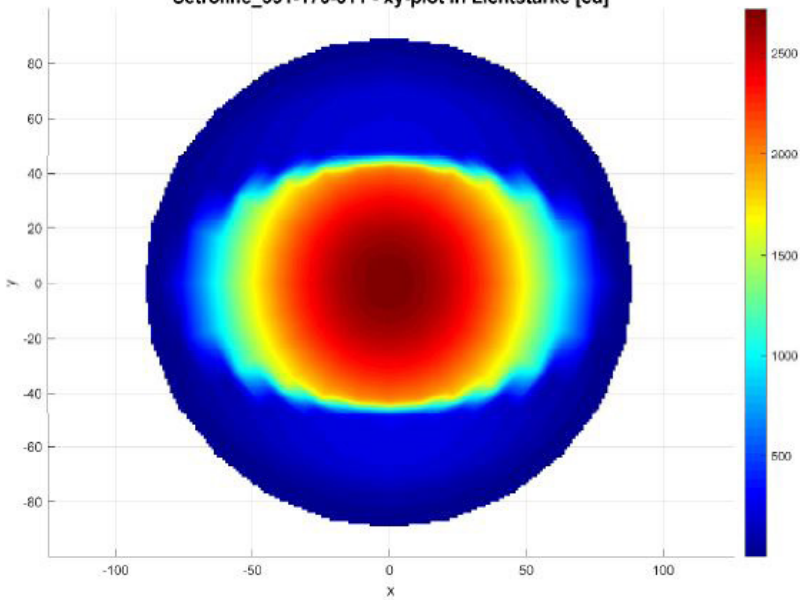
The unique versatility of our Setroline is, however, not only reflected in the installation of the lamp: various volt versions, different lengths, with or without UL certification, dimmable or not, different light colours, ... there is a long list of available variants!

As you can see, our Setroline is a compact all-rounder!





Setroline_591-170-011 - xy-plot in Lichtstärke [cd]



Distribution of the luminous intensity based on Setroline/170011 | Item no. 591-170-011

Setroline70/170001

// TECHNICAL DATA

ITEM NO.: 591-170-001

Operating voltage	230 V AC 50 Hz
Rated output	28,9 W
Ambient temp.	-5°C - max. 40°C
System of protection	IP67 IP 69K
Protection class	SK I
Weight	2,27 kg
Glass plate	ESG
Lamp housing	Aluminium, anodized
Type of lighting	Built-in/surface/tube
Scope of application	Industrial sector



// LIGHT SOURCES

Number of LEDs	84
Lifetime	50.000 h
Colour rendering	Ra > 80
Luminous flux	4000 lm
Light efficiency	170 lm / W
Light colour	4000 K

// BALLAST (internal)

Operating voltage	230V AC
Power factor	0,96
Output voltage	27-51 V DC
Output power	max. 37 W

// ELECTRICAL CONNECTION

Type of connection	Flange plug M12x1 S-coded, 4-pole
Pin assignment	Pin 1: L; Pin 3: N; Pin 4: PE

// FEATURES

- Innovative design which allows for three installation variants: as recessed or surface lamp or via tube clamps as tube lamp substitute – brilliant!
- IP67/IP69K – for particularly rough conditions
- Single-pane safety glass

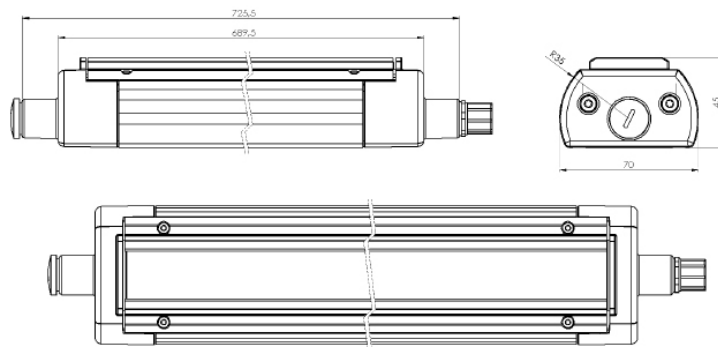
// SHORT OVERVIEW

TYPE	ITEM NO.	VOLTAGE	POWER	LUMINOUS/ LUMEN	COVERAGE	LENGTH/MM	CONNECTION
Setroline70	591-170-001	230 V AC	28,9 W	4000	ESG, clear	725	M12, lateral

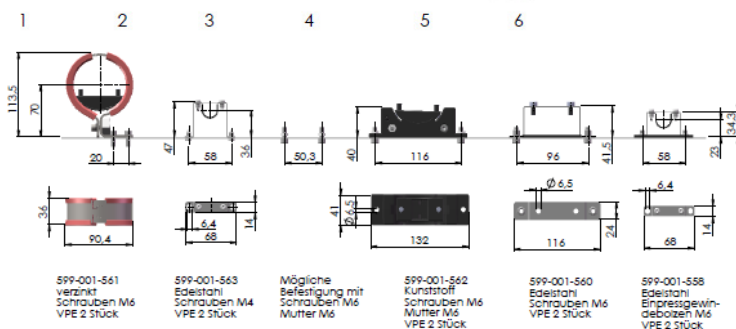
// VARIATIONS

TYPE	ITEM NO.	VOLTAGE	POWER	LUMINOUS/ LUMEN	COVERAGE	LENGTH/MM	CONNECTION
Setroline70	591-170-011	230 V AC	57,2 W	8000	ESG, clear	1285	M12, lateral
Setroline70	591-170-021	230 V AC	17,3 W	2000	ESG, clear	446	M12, lateral

// TECHNICAL DRAWING



// FIXING / ACCESSORIES (optional)



Cable box M12, S-coded
ITEM NO. 213-080-046

// STANDARDS

EN 55015:2016-04
EN 60598-1:2015-10
EN 62031:2015-09
EN 61000-4-4:2013-04
EN 61000-3-2:2017-03
EN 61000-4-5:2015-03
EN 61000-3-3:2014-03
EN 61000-4-2:2009-12

TECHMALUX

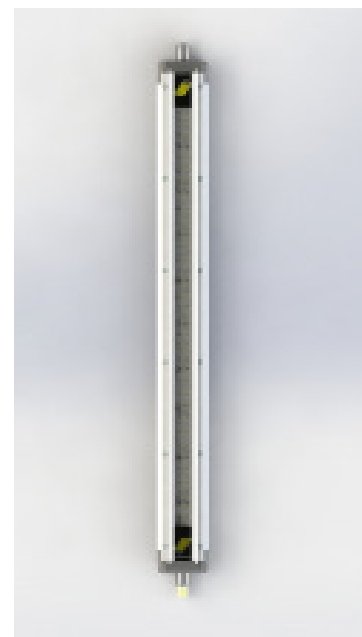
Setroline70/170031



// TECHNICAL DATA

ITEM NO.: 591-170-031

Operating voltage	24 V DC
Rated output	33,6 W
Ambient temp.	-5°C - max. 40°C
System of protection	IP67 IP69K
Protection class	SK II
Weight	2,6 kg
Glass plate	ESG
Lamp housing	Aluminium, anodized
Type of lighting	Built-in/surface/tube
Scope of application	Industrial sector



// LIGHT SOURCES

Number of LEDs	120
Current	1,4 A
Lifetime	> 60.000 h
Colour rendering	Ra > 80
Energy efficiency class	A ++
Luminous flux	4200 lm
Light efficiency	125 lm / W
Light colour	5000 K

// BALLAST (external)

Output voltage	24 V DC
Output power	min. 38 W

// ELECTRICAL CONNECTION

Type of connection	Flange plug M12x1 A-coded; 4-pole
Pin assignment	Pin1: +24 V DC; Pin 3: GND

// FEATURES

- Allrounder! Recessed, surface or tube lamp
- Various mounting options included as an accessory
- Quick and easy to connect via M12 connector
- Connection to machine voltage 24 V DC
- Very robust aluminium housing



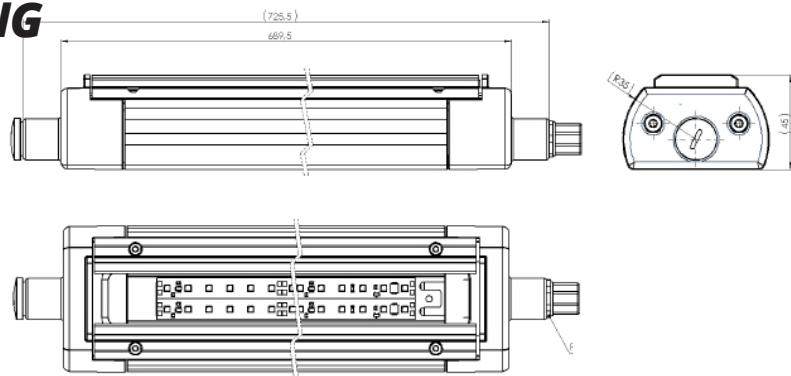
// SHORT OVERVIEW

TYPE	ITEM NO.	VOLTAGE	POWER	LUMINOUS/ LUMEN	COVERAGE	LENGTH/MM	CONNECTION
Setroline70	591-170-031	24 V DC	33,6 W	4200	ESG, clear	725	M12, lateral

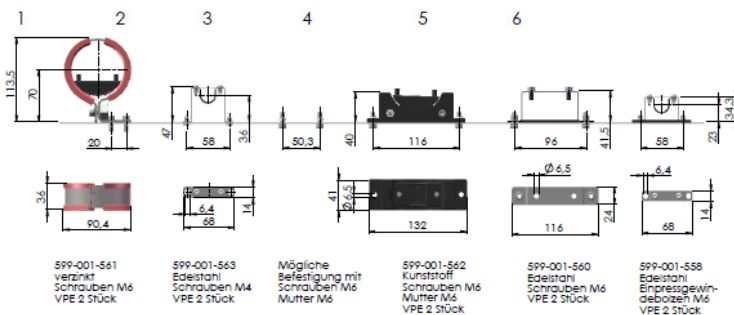
// VARIATIONS

TYPE	ITEM NO.	VOLTAGE	POWER	LUMINOUS/ LUMEN	COVERAGE	LENGTH/MM	CONNECTION
Setroline70	591-170-041	24 V DC	60,1 W	7560	ESG, clear	1285	M12, lateral
Setroline70	591-170-051	24 V DC	16,8 W	2100	ESG, clear	446	M12, lateral
Setroline70	591-170-061	24 V DC	43,7 W	5460	ESG, satined	938	M12, lateral

// TECHNICAL DRAWING



// FIXING / ACCESSORIES (optional)



SPP-001-561
verzinkt
Schrauben M6
VPE 2 Stück

SPP-001-563
Edelstahl
Schrauben M4
VPE 2 Stück

Mögliche
Befestigung mit
Schrauben M6
Mutter M6

SPP-001-562
Kunststoff
Schrauben M6
Mutter M6
VPE 2 Stück

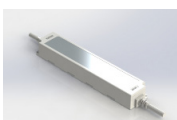
SPP-001-560
Edelstahl
Schrauben M6
VPE 2 Stück

SPP-001-558
Edelstahl
Einpressgewin-
debohren M6
VPE 2 Stück

// STANDARDS

EN 55015:2016-04
EN 60598-1:2015-10
EN 62031:2015-09
UL 2108

Power supply SELV (IP66)



ITEM NO. 213-820-212

Input: 220-240 V | 0-60 Hz

Output: 24 V DC | max. 40 W

Cable box M12, A-coded

ITEM NO. 213-080-058

TECHMALUX

Setroline/169001

**RGBW
available**

// TECHNICAL DATA

ITEM NO.: 591-169-001

Operating voltage	24 V DC
Rated output	16,8 W
Ambient temp.	-5°C - max. 40°C
System of protection	IP67 IP69K
Protection class	SK II
Weight	1,01 kg
Glass plate	ESG
Lamp housing	Aluminium, anodized
Type of lighting	Built-in/surface/tube
Scope of application	Industrial sector



// LIGHT SOURCES

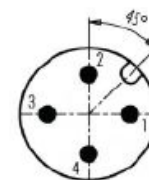
Number of LEDs	60
Lifetime	> 60.000 h
Colour rendering	Ra > 80
Luminous flux	2100 lm
Light efficiency	125 lm / W
Light colour	5000 K

// BALLAST (external)

Output voltage	24 V DC
Output power	min. 20 W

// ELECTRICAL CONNECTION

Type of connection	Flange plug M12x1 A-coded; 4-pole
Pin assignment	Pin 1: +; Pin 2: n.c.; Pin 3: -; Pin 4: n.c.



// FEATURES

- Robust aluminium housing – good heat dissipation
- Space-saving installation due to slim design – Ø 40 mm!
- RGBW variant available
- Excellent light output
- 2 securing nuts M6 at the rear – very convenient!

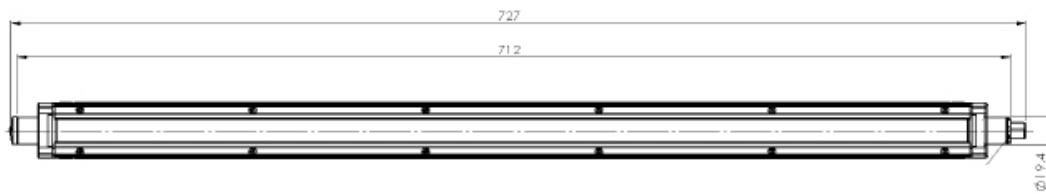
// SHORT OVERVIEW

TYPE	ITEM NO.	VOLTAGE	POWER	LUMINOUS/ LUMEN	COVERAGE	LENGTH/MM	CONNECTION
Setroline40	591-169-001	24 V DC	16,8 W	2100	ESG	712	M12, lateral

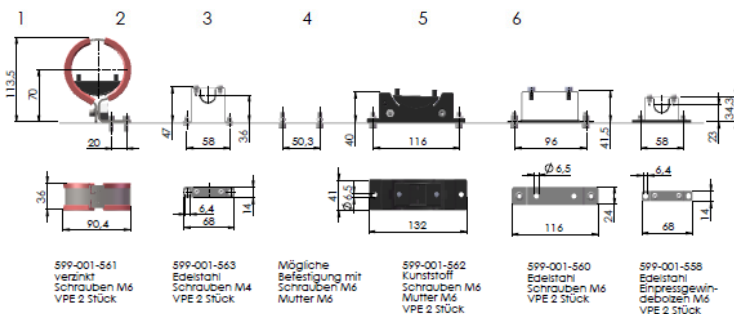
// VARIATIONS

TYPE	ITEM NO.	VOLTAGE	POWER	LUMINOUS/ LUMEN	COVERAGE	LENGTH/MM	CONNECTION
Setroline40 RGBW	591-169-003	24 V DC	10 W	540 RGBW	ESG, clear	712	M12, lateral

// TECHNICAL DRAWING



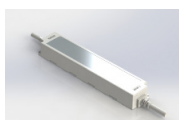
// FIXING / ACCESSORIES (optional)



// STANDARDS

EN 55015:2016-04
EN 60598-1:2015-10
EN 62031:2015-09

Power supply SELV (IP67)



ITEM NO. 213-820-219

Input: 110-240 V | 50-60 Hz

Output: 24 V DC | max. 25 W

Cable box M12, A-coded

ITEM NO. 213-080-058

TECHMALUX

Setroline/170012

dimnable

// TECHNICAL DATA

ITEM NO.: 591-170-012

Operating voltage	230 V AC 50 Hz
Rated output	60,5 W
Ambient temp.	-5°C - max. 40°C
System of protection	IP67 IP69K
Protection class	SK I
Weight	4,66 kg
Glass plate	ESG
Lamp housing	Aluminium, anodized
Type of lighting	Built-in/surface/tube
Scope of application	Industrial sector



// LIGHT SOURCES

Number of LEDs	168
Lifetime	50.000 h
Colour rendering	Ra > 80
Luminous flux	4469 lm
Light efficiency	190 lm / W
Light colour	4000 K

// BALLAST (intern)

Operating voltage	230 V AC
Power factor	> 0,95
Rated output current	600-1400 mA
Rated output power	54 W

// ELECTRICAL CONNECTION

Connection	Cable gland with connection cable PUR 5G1,5
Pin assignment	Pin 1: L; Pin 2: N; Pin 3: DALI; Pin 4: DALI; Pin 5: PE

// FEATURES

- Dimmable variant – intelligent control to 1%
- Single-pane safety glass
- High luminous flux – good light output
- Compact and robust – that is how a machine lamp should be
- IP67/IP69K

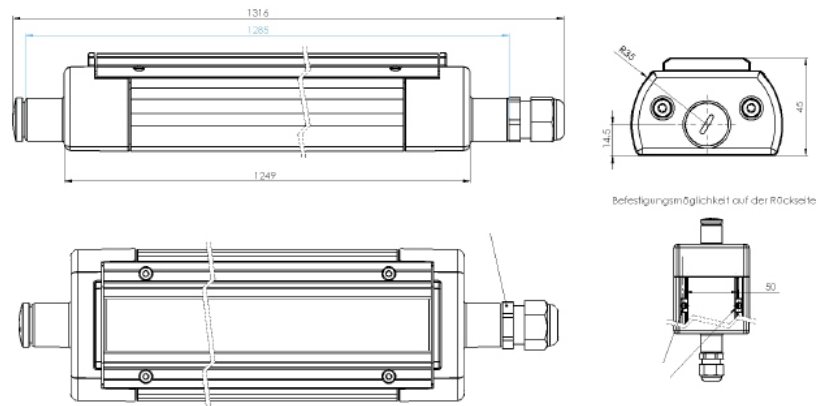
// SHORT OVERVIEW

TYPE	ITEM NO.	VOLTAGE	POWER	LUMINOUS/ LUMEN	COVERAGE	LENGTH/MM	CONNECTION
Setroline	591-170-012	230 V AC	60,5 W	4469	ESG, clear	1249	5 m cable

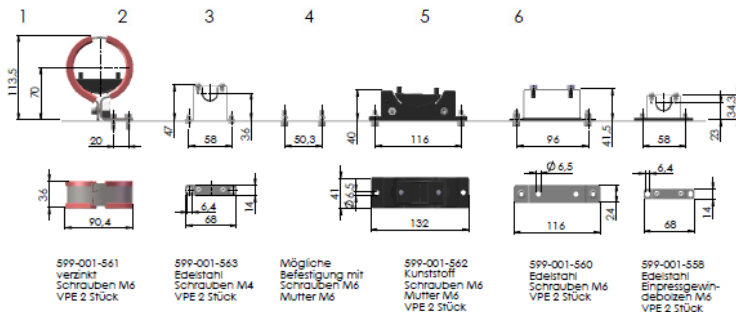
// VARIATIONS

TYPE	ITEM NO.	VOLTAGE	POWER	LUMINOUS/ LUMEN	COVERAGE	LENGTH/MM	CONNECTION
Setroline70	591-170-003	230 V AC	27,6 W	1750	ESG, satined	725	M12, lateral

// TECHNICAL DRAWING



// FIXING / ACCESSORIES (optional)



Cable box M12, S-coded
ITEM NO. 213-080-046

// STANDARDS

EN 55015:2016-04
 EN 60598-1:2015-10
 EN 62031:2015-09
 EN 61000-4-4:2013-04
 EN 61000-3-2:2017-03
 EN 6100-4-5:2015-03
 EN 61000-3-3:2014-03