

## // 06 STABLED PRODUCT SERIES

**MORE THAN JUST A SIMPLE ,LIGHT ROD'**

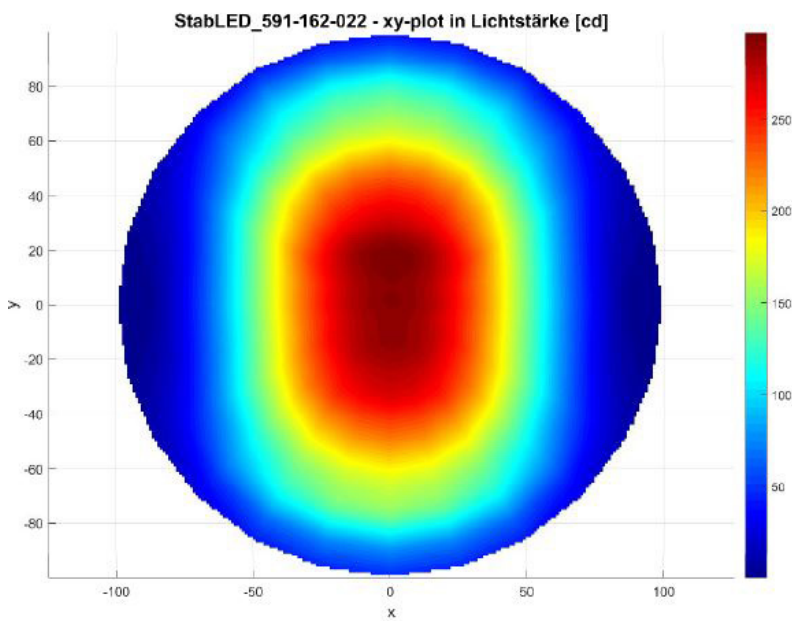
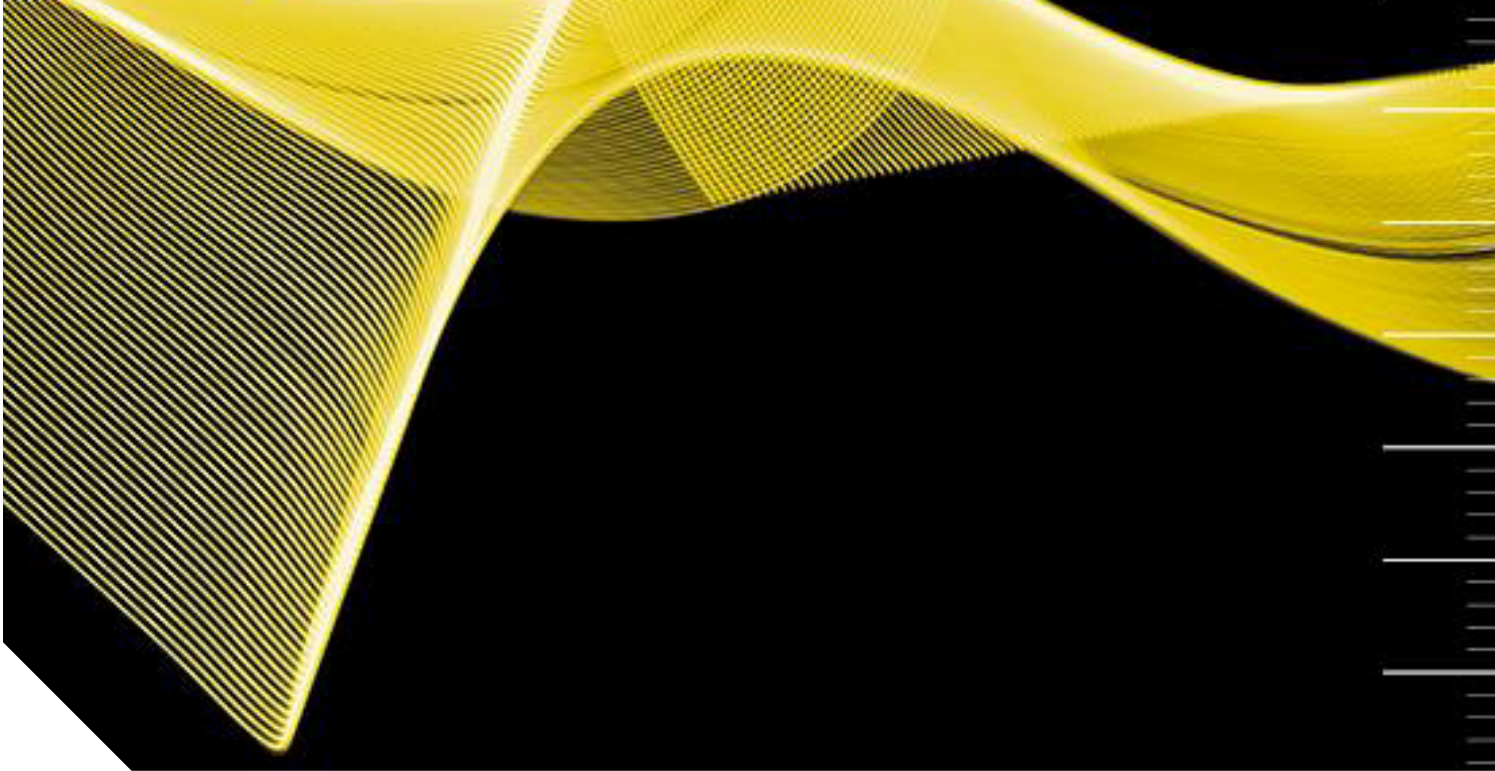
# StabLED

As the heading says: our StabLED lamps are more than pure „light rods“. The StabLED lamp has its origin in the workshops where it still reliably places lifting platforms and inspection pits in the right light. Due to a diameter of only 20 mm, it is extremely good at that! Furthermore, owing to this narrow diameter it has meanwhile also been used outside workshops – i.e. wherever there is little space available for illumination.

The extremely narrow diameter of the lighting protective tube applies to the entire StabLED product series – additional variants have e.g. a diameter of 26 mm or 40 mm.

It can almost be said that these lamps represent a mini version of the classical 70 mm tube lamps – combining all of their advantages in a slim housing – great!





Distribution of the luminous intensity based on StabLED20/162022 | Item no. 591-162-022

# StabLED20/162022



## // TECHNICAL DATA

### ITEM NO.: 591-162-022

Operating voltage	24 V DC
Rated output	20 W
Ambient temp.	-5°C - max. 40°C
System of protection	IP67
Protection class	SK II
Weight	0,55 kg
Coverage	Polycarbonat
Lamp housing	Aluminium
Type of lighting	Tubular lamp
Scope of application	Industrial sector



## // LIGHT SOURCES

Number of LEDs	150
Current	0,83 A
Colour rendering	Ra > 80
Luminous flux	1170 lm
Light efficiency	58 lm / W
Light colour	4000 K

## // BALLAST (external)

Output voltage	24 V DC
Output power	min. 25 W

## // ELECTRICAL CONNECTION

Cable gland	M16x1,5 Ms
-------------	------------

## // FEATURES

- Extremely narrow LED tube lamp – Ø of only 20 mm!
- Our StabLED is a true space-saving miracle
- Ideal e.g. for use in lifting platforms – rotatable!
- Through-wiring
- Easy connection via cable gland M16x1,5



## // SHORT OVERVIEW

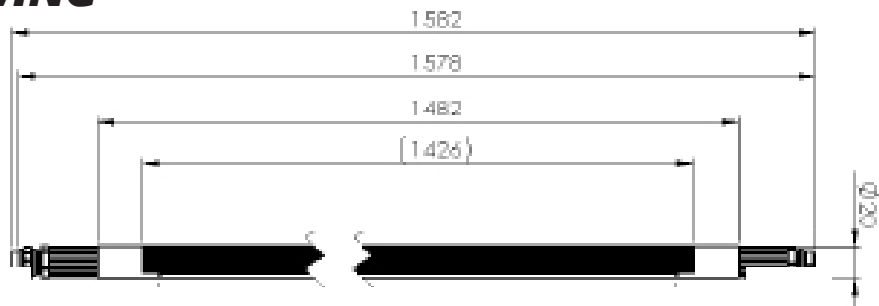
TYPE	ITEM NO.	VOLTAGE	POWER	LUMINOUS/ LUMEN	COVERAGE	LENGTH/MM	CONNECTION
StabLED20	591-162-022	24 V DC	20 W	1170	Polycarbonat	1582	cable gland

## // VARIATIONS

TYPE	ITEM NO.	VOLTAGE	POWER	LUMINOUS/ LUMEN	PROTECTIVE TUBE	LENGTH/MM	CONNECTION
StabLED20	5941-162-003	24 V DC	67,2 W	8400	PC	2556	M12 + cable gland
StabLED20	591-162-004	24 V DC	10,4 W	608	PC	922	M12, plug/ socket
StabLED20	591-162-007	24 V DC	24 W	4200	PC	2696	cable gland
StabLED20	591-162-024	24 V DC	16,6 W	1076	PC	1350	cable gland

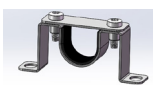
Other variations available! For further information, please contact us.

## // TECHNICAL DRAWING

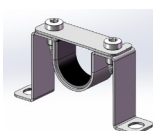


## // FIXING / ACCESSORIES (optional)

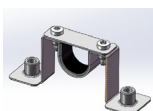
### Fixing clamps



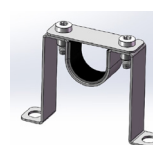
ITEM NO. 599-001-024  
Fixing clamp stainless steel A4,  
68x14x28,2 mm, VPE 2 pcs



ITEM NO. 599-001-558  
Fixing clamp stainless steel A4,  
Height 33 mm, VPE 2 pcs

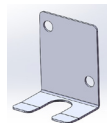


ITEM NO. 599-001-559  
Fixing clamp stainless steel A4,  
Height 33mm, with blind rivet nut,  
VPE 2 pcs



ITEM NO. 599-001-563  
Fixing clamp stainless steel A4,  
VPE 2 pcs

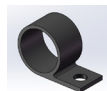
### Mount



ITEM NO. 350-001-068  
Mount StabLED

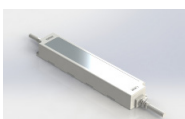


ITEM NO. 350-001-958  
Fixing clamp snapping in



ITEM NO. 350-001-959  
Fixing clamp LED 20

### Power supply SELV (IP66)



ITEM NO. 213-820-212  
Input: 220-240 V | 0-60 Hz |  
Output: 24 V DC | max. 40 W

### // STANDARDS

EN 55015:2016-04  
EN 60598-1:2015-10  
EN 62031:2015-09  
UL 2108

**TECHMALUX**

# StabLED26/166002



## // TECHNICAL DATA

### ITEM NO.: 591-166-002

Operating voltage	24 V DC
Rated output	6,3 W
Ambient temp.	-5°C - max. 40°C
System of protection	IP67
Protection class	SK II
Weight	0,32 kg
Protective tube	Borosilicate
Lamp housing	Aluminium
Type of lighting	Tubular lamp
Scope of application	Industrial sector



## // LIGHT SOURCES

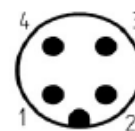
Number of LEDs	24
Current	0,26 A
Lifetime	> 60.000 h
Colour rendering	Ra > 80
Energy efficiency class	A ++
Luminous flux	840 lm
Light efficiency	134 lm / W
Light colour	5000 K

## // BALLAST (external)

Output voltage	24 V DC
Output power	min. 11 W

## // ELECTRICAL CONNECTION

Type of connection	Flange plug M12x1, A-coded, 4-pole
Pin assignment	Pin 1: +24 V DC; Pin 2: GND



## // FEATURES

- Very narrow LED tube lamp – place-saving diameter of only 26 mm!
- Resistant against the common coolants and lubricants
- Removable glare protection
- Rotatable (with appropriate accessories)



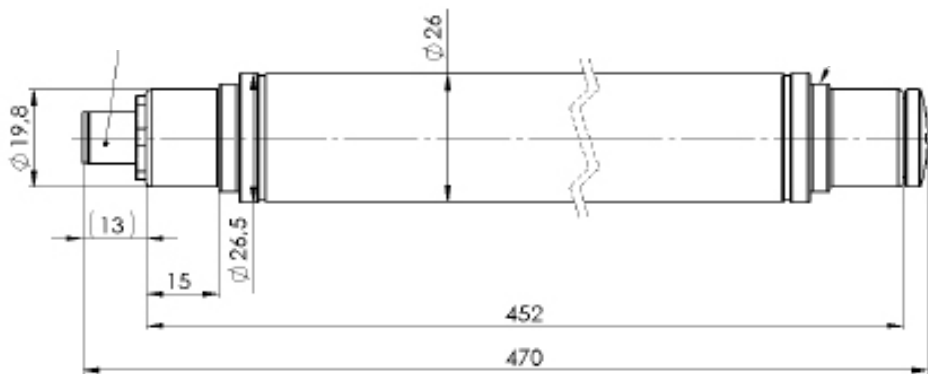
## // SHORT OVERVIEW

TYPE	ITEM NO.	VOLTAGE	POWER	LUMINOUS/ LUMEN	PROTECTIVE TUBE	LENGTH/MM	CONNECTION
StabLED26	591-166-002	24 V DC	6,3 W	840	Borosilicate	470	M12, lateral

## // VARIATIONS

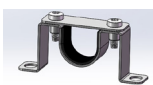
TYPE	ITEM NO.	VOLTAGE	POWER	LUMINOUS/ LUMEN	PROTECTIVE TUBE	LENGTH/MM	CONNECTION
StabLED26	591-166-004	24 V DC	13,5 W	1680	Borosilicate	712	M12, lateral

## // TECHNICAL DRAWING

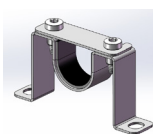


## // FIXING / ACCESSORIES (optional)

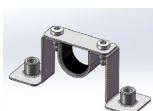
### Fixing clamps



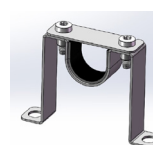
ITEM NO. 599-001-024  
Fixing clamp stainless steel A4,  
68x14x28,2 mm, VPE 2 pcs



ITEM NO. 599-001-558  
Fixing clamp stainless steel A4,  
Height 33 mm, VPE 2 pcs

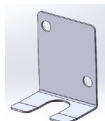


ITEM NO. 599-001-559  
Fixing clamp stainless steel A4,  
Height 33mm, with blind rivet nut,  
VPE 2 pcs



ITEM NO. 599-001-563  
Fixing clamp stainless steel A4,  
VPE 2 pcs

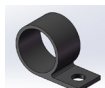
### Mount



ITEM NO. 350-001-068  
Mount StabLED

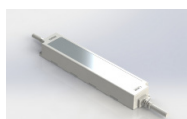


ITEM NO. 350-001-958  
Fixing clamp snapping in



ITEM NO. 350-001-959  
Fixing clamp LED 20

### Power supply SELV (IP67)



ITEM NO. 213-820-219  
Input: 100-240 V | 50-60 Hz  
Output: 24 V DC | max. 25 W

### // STANDARDS

EN 55015:2016-04  
EN 60598-1:2015-10  
EN 62031:2015-09  
UL 2108

**TECHMALUX**

# StabLED26/166005



## // TECHNICAL DATA

### ITEM NO.: 591-166-005

Operating voltage	24 V DC
Rated output	13,5 W
Ambient temp.	-5°C - max. 40°C
System of protection	IP67
Protection class	SK II
Weight	1,2 kg
Protective tube	Borosilicate
Lamp housing	Aluminium
Type of lighting	Tubular lamp
Scope of application	Industrial sector



## // LIGHT SOURCES

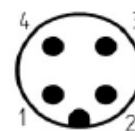
Number of LEDs	48
Current	0,56 A
Lifetime	> 60.000 h
Colour rendering	Ra > 80
Energy efficiency class	A ++
Luminous flux	1680 lm
Light efficiency	125 lm / W
Light colour	5000 K

## // BALLAST (external)

Output voltage	24 V DC
Output power	min. 18 W

## // ELECTRICAL CONNECTION

Type of connection	Flange plug M12x1, A-coded, 4-pole
Pin assignment	Pin 1: +24 V DC; Pin 2: GND



## // FEATURES

- Narrow diameter of only 40 mm – place-saving
- High luminous flux and good light output
- Robust protective tube – 5 mm
- Connection to machine voltage 24 V DC
- M12 plug connector



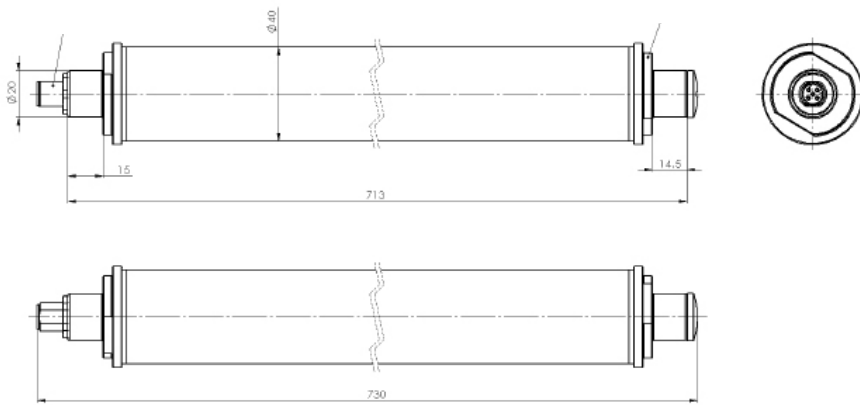
## // SHORT OVERVIEW

TYPE	ITEM NO.	VOLTAGE	POWER	LUMINOUS/ LUMEN	PROTECTIVE TUBE	LENGTH/MM	CONNECTION
StabLED26	591-166-005	24 V DC	13,5	1680	Borosilicate	730	M12, lateral

## // VARIATIONS

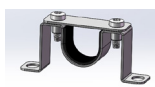
TYPE	ITEM NO.	VOLTAGE	POWER	LUMINOUS/ LUMEN	PROTECTIVE TUBE	LENGTH/MM	CONNECTION
StabLED30 white/red	591-166-023	24 V DC	15,4 W   9,1 W	1600   265	PMMA	593	M12, wired

## // TECHNICAL DRAWING

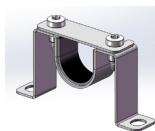


## // FIXING / ACCESSORIES (optional)

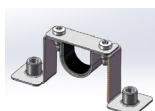
### Fixing clamps



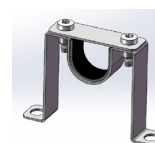
ITEM NO. 599-001-024  
Fixing clamp Stainless steel A4,  
68x14x28,2 mm, VPE 2 pcs



ITEM NO. 599-001-558  
Fixing clamp Stainless steel A4,  
Height 33 mm, VPE 2 pcs

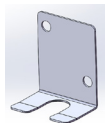


ITEM NO. 599-001-559  
Fixing clamp Stainless steel A4,  
Height 33mm, with blind rivet nut,  
VPE 2 pcs



ITEM NO. 599-001-563  
Fixing clamp Stainless steel A4,  
VPE 2 pcs

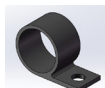
### Mount



ITEM NO. 350-001-068  
Mount StabLED



ITEM NO. 350-001-958  
Fixing clamp snapping in



ITEM NO. 350-001-959  
Fixing clamp LED 20

### Power supply SELV (IP67)



ITEM NO. 213-820-219  
Input: 110-240 V | 50-60 Hz |  
Output: 24 V DC | max. 25 W

### // STANDARDS

EN 55015:2016-04  
EN 60598-1:2015-10  
EN 62031:2015-09  
UL 2108

**TECHMALUX**