

// 01 AULED PRODUCT SERIES

STYLE & FUNCTIONALITY IN PERFECTION

AuLED

What distinguishes our AuLED product series?

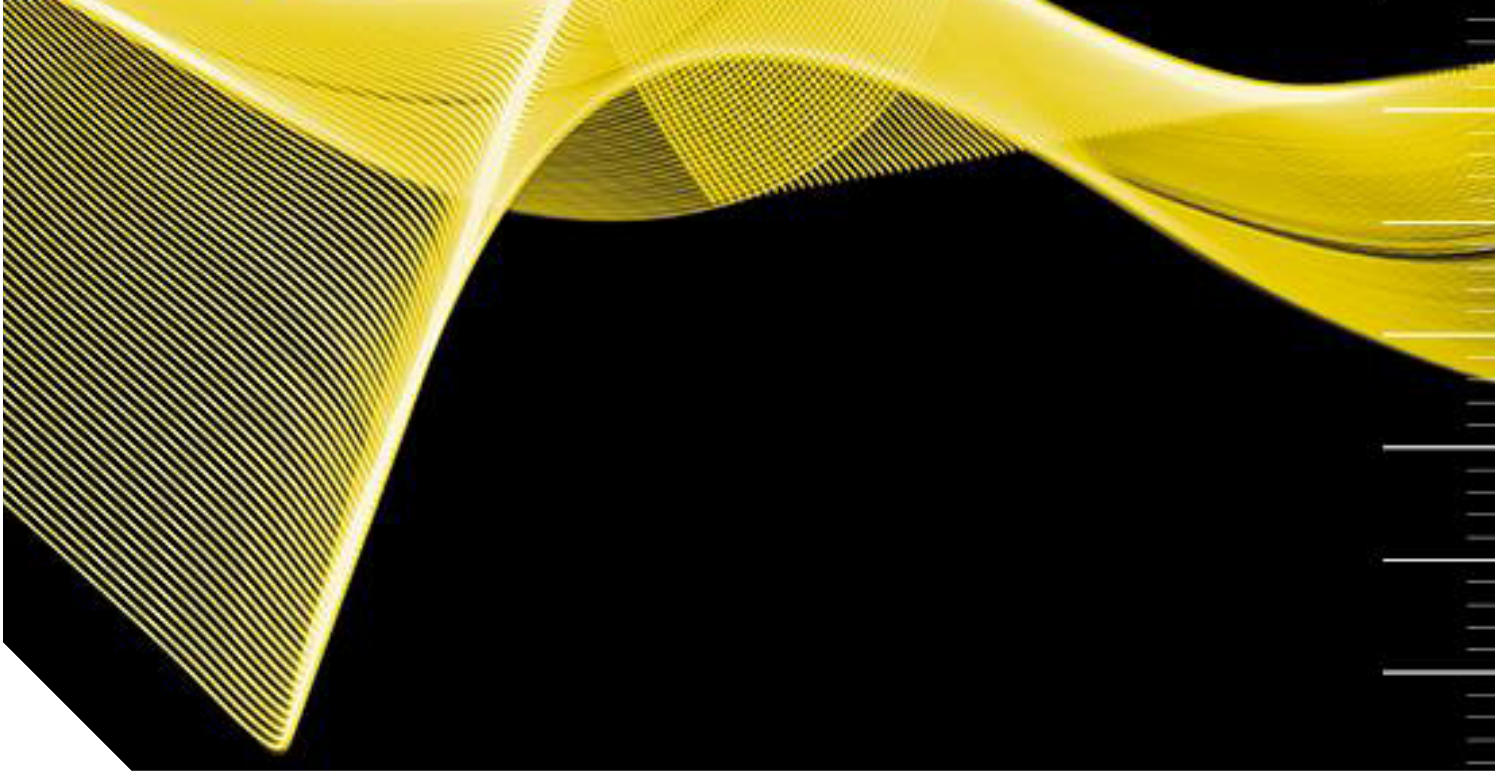
High quality, a straightforward, appealing design, functionality and an enormous range of available model variants, thus offering an unbeatably wide variety of applications.

The AuLED type of lamp is a true „allrounder“, its housing made of aluminium or stainless steel, cooled, as built-in or surface lamp, M8 or M12 connector, pure white light or the combination of all colours ...

please discover on the next pages the great diversity of our AuLED product range.

As diverse as the models available are the potential fields of applications of our AuLED lamps: no matter whether it is in the food industry, classical mechanical engineering, textile industry or in workshops – our AuLED lamps reliably ensure optimal lighting conditions.





AuLED 50/505001



// TECHNICAL DATA

ITEM NO.: 592-505-001

Operating voltage	24 V DC
Rated output	7,2 W
Ambient temp.	-5°C - max. 40°C
System of protection	IP67
Protection class	SK II
Weight	0,22 kg
Glass plate	ESG
Lamp housing	Aluminium, anodized
Type of lighting	Surface lamp
Scope of application	Industrial sector



// LIGHT SOURCES

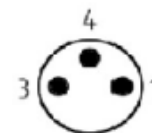
Number of LEDs	28
Current	300 mA
Lifetime	> 60.000 h
Colour rendering	Ra > 80
Energy efficiency class	A ++
Luminous flux	1050 lm
Light efficiency	145 lm / W
Light colour	5000 K

// BALLAST (external)

Output voltage	24 V DC
Output power	min. 12 W

// ELECTRICAL CONNECTION

Type of connection	Flange plug M8x1, 3-pole
Pin assignment	Pin 1: + 24 V DC; Pin 3: GND



// FEATURES

- Robust aluminium housing with ESG glass
- Narrow, reliable and highly luminous
- High luminous flux – good light output
- Energy efficiency class A++
- M8 plug connector



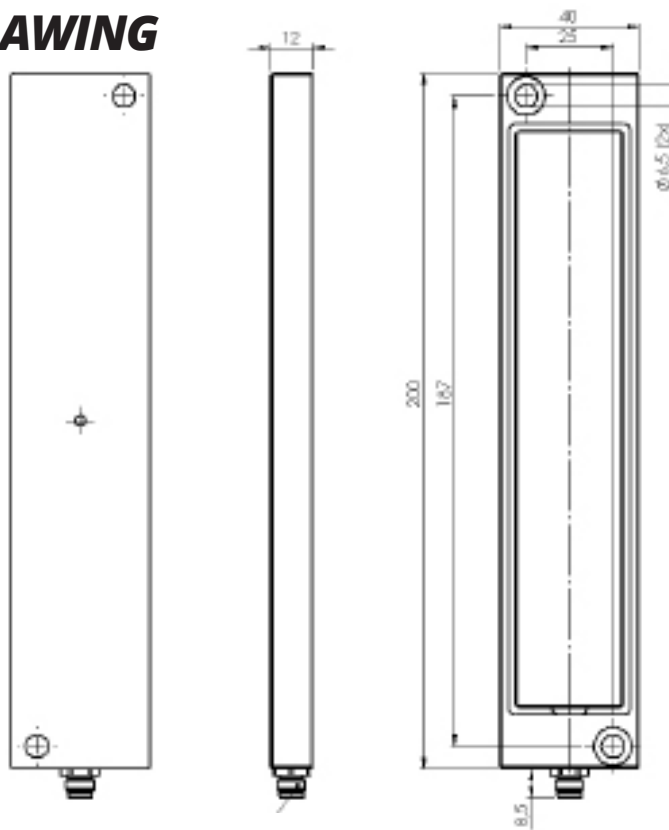
// SHORT OVERVIEW

TYPE	ITEM NO.	VOLTAGE	POWER	LUMINOUS/ LUMEN	COVERAGE	DIMENSIONS/ MM	PLUG
AuLED 50	592-505-001	24 V DC	7,2 W	1050	ESG, clear	200x40x12	M8, lateral

// VARIATIONS

TYPE	ITEM NO.	VOLTAGE	POWER	LUMINOUS/ LUMEN	COVERAGE	DIMENSIONS/ MM	PLUG
AuLED 50	592-505-002	24 V DC	7,2 W	1050	ESG, clear	200x40x12	M8, back-mounted

// TECHNICAL DRAWING



// ACCESSORIES (optional)

Power supply SELV (IP67)

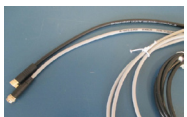


ITEM NO. 213-820-219

Input: 110-240 V | 50-60 Hz

Output: 24 V DC | max. 25 W

Connection cable M8



ITEM NO. 214-100-001

System of protection IP 67 | Length = 2 m

// STANDARDS

EN 55015:2016-04
 EN 60598-1:2015-10
 EN 62031:2015-09
 UL 2108

TECHMALUX

AuLED 50/505003

stainless
steel



// TECHNICAL DATA

ITEM NO.: 592-505-003

Operating voltage	24 V DC
Rated output	7,2 W
Ambient temp.	-5°C - max. 40°C
System of protection	IP67
Protection class	SK II
Weight	0,92 kg
Glass plate	ESG
Lamp housing	Stainless steel
Type of lighting	Surface lamp
Scope of application	Industrial sector



// LIGHT SOURCES

Number of LEDs	28
Current	0,3 A
Lifetime	> 50.000 h
Colour rendering	Ra > 80
Luminous flux	1050 lm
Light efficiency	145 lm / W
Light colour	5000 K

// BALLAST (external)

Output voltage	24 V DC
Output power	min. 12 W

// ELECTRICAL CONNECTION

Type of connection	Flange plug M12x1, 4-pole
Pin assignment	Pin 1: + 24 V DC; Pin 3: GND

// FEATURES

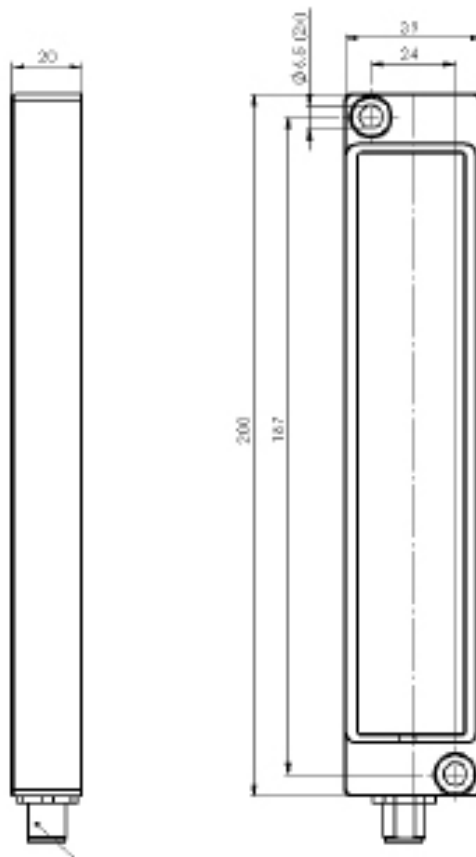
- High-quality stainless steel housing
- Particularly suitable for use in the food sector
- Low maintenance and service-friendly
- Also suitable for use in harsh environments
- M8 plug connector



// SHORT OVERVIEW

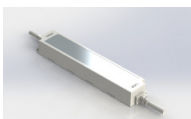
TYPE	ITEM NO.	VOLTAGE	POWER	LUMINOUS/ LUMEN	COVERAGE	DIMENSIONS/ MM	PLUG
AuLED 50	592-505-003	24 V DC	7,2 W	1050	ESG, clear	135x60x20	M8, lateral

// TECHNICAL DRAWING



// ACCESSORIES (optional)

Power supply SELV (IP67)



ITEM NO. 213-820-219

Input: 110-240 V | 50-60 Hz

Output: 24 V DC | max. 25 W

Cable box

4-pole | M12x1 | A-coded

Cable passage Ø 4-5mm ITEM NO. 213-080-058

Cable passage Ø 8-10mm ITEM NO. 213-080-056

// STANDARDS

EN 55015:2016-04
 EN 60598-1:2015-10
 EN 62031:2015-09
 UL 2108

TECHMALUX